



# Mapping and Assessment of Ecosystems and their Services: Key achievements and roadmap for an EU wide ecosystem assessment

Joachim Maes

European Commission, Joint Research Centre, Ispra

Anne Teller

European Commission DG Environment, Brussels

Markus Erhard

European Environment Agency, Copenhagen

# MAES working group oversees the implementation of Action 5

Research community  
H2020 projects

[www.esmeralda-project.eu](http://www.esmeralda-project.eu)

European Commission,  
European Environment Agency

Cities and regions  
Stakeholders

EU Member States  
and other countries

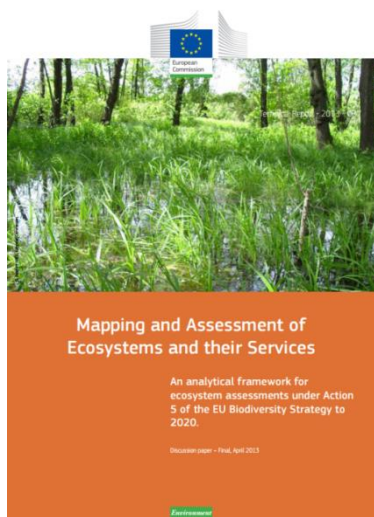


## **TASKS of the Working group**

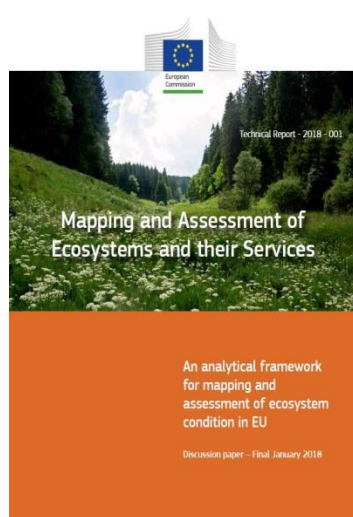
- 1. Guidance for member states*
- 2. Common ecosystem assessment pilots*
- 3. EU wide assessment*

# Guidance documents (MAES reports)

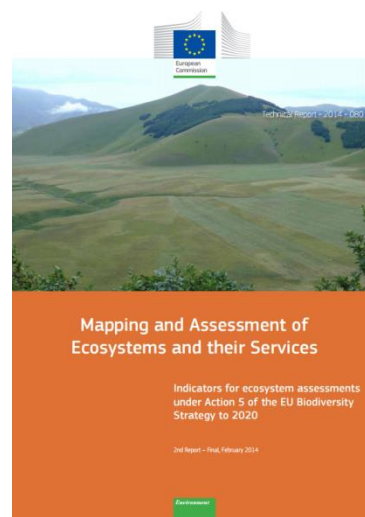
Conceptual  
framework  
and  
**typologies**



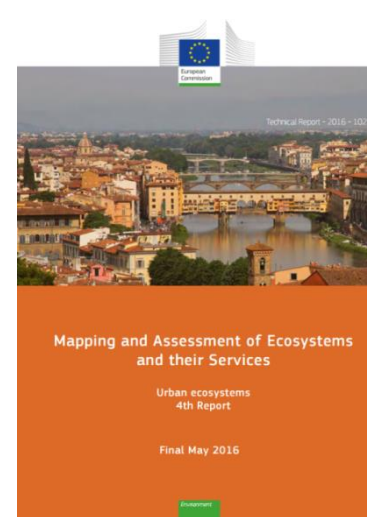
Indicators  
for  
**ecosystem  
condition**



Indicators  
for  
**ecosystem  
services**



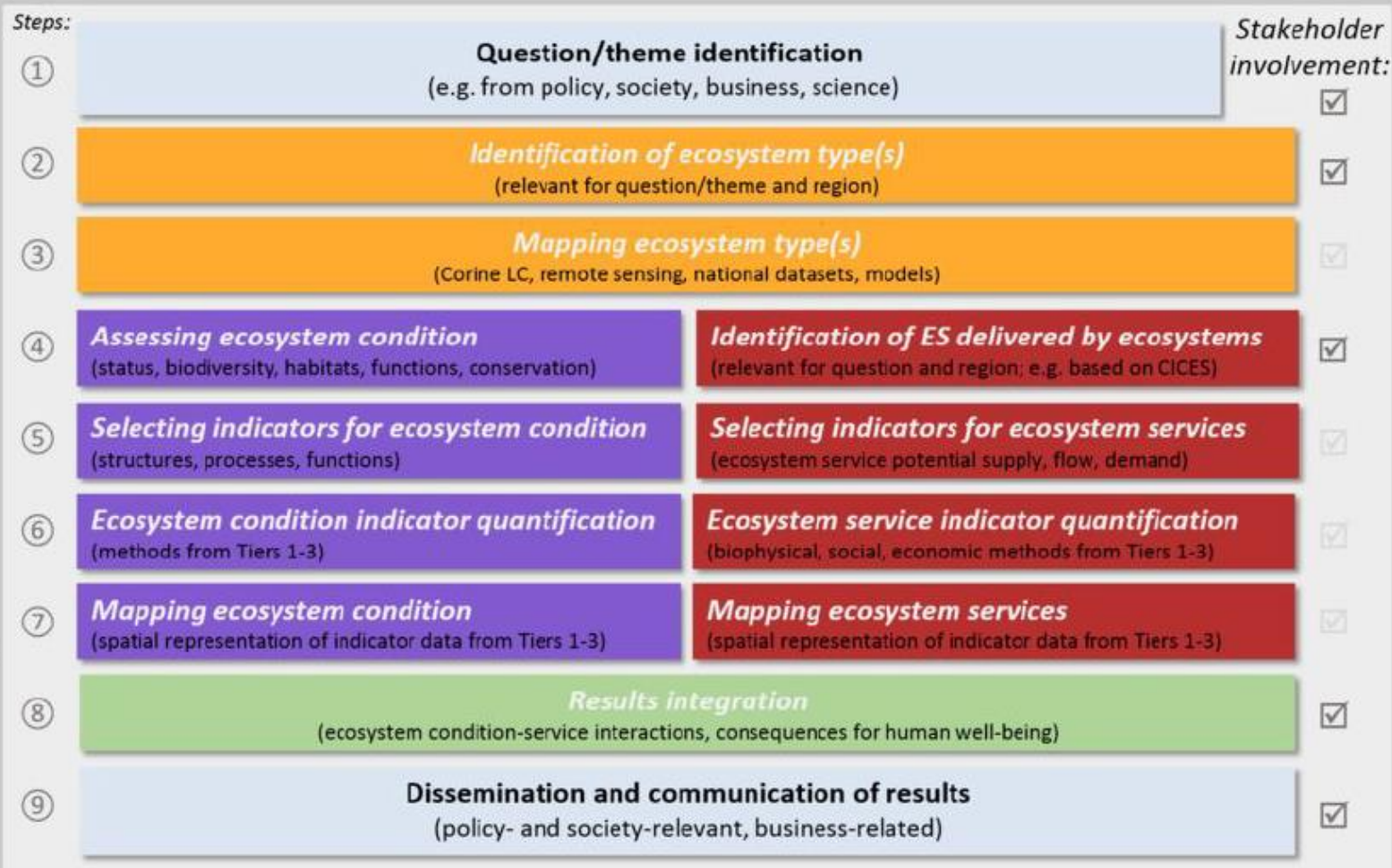
**Urban**  
ecosystems



<http://biodiversity.europa.eu/maes>

# Guidance for ecosystems assessment

## Framework for integrated Mapping and Assessment of Ecosystems and their Services (MAES)



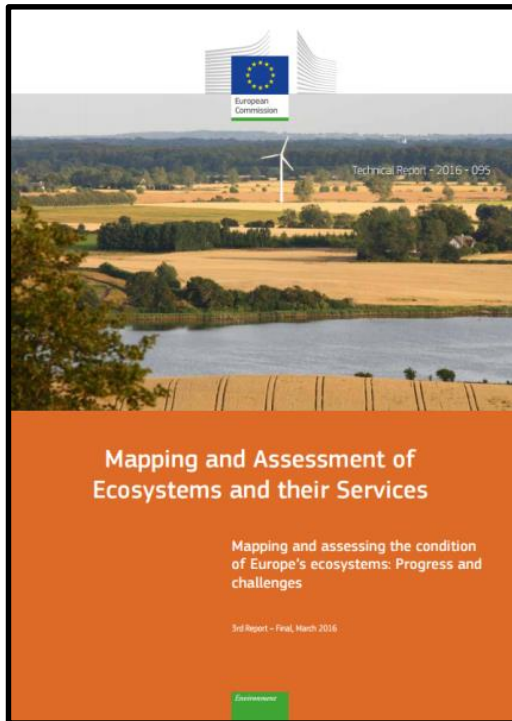
- Ecosystem types
- Ecosystem conditions
- Ecosystem services
- Integration

(Colours refer to Figure 2 of the [2<sup>nd</sup> MAES report](#))

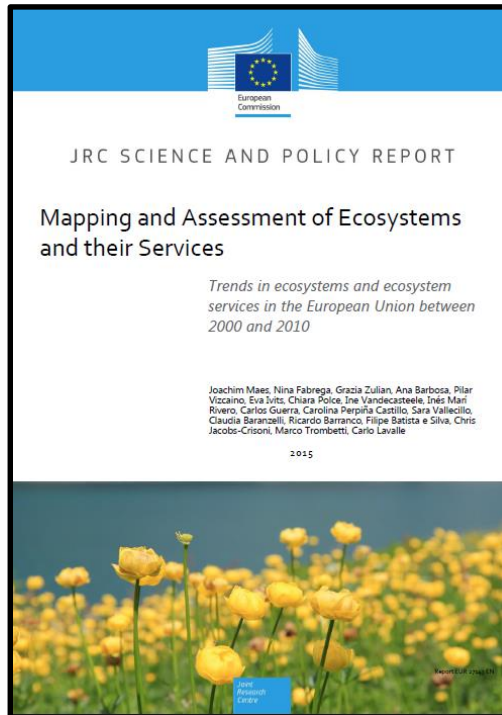
For respective definitions, See article text.

# Assessment reports

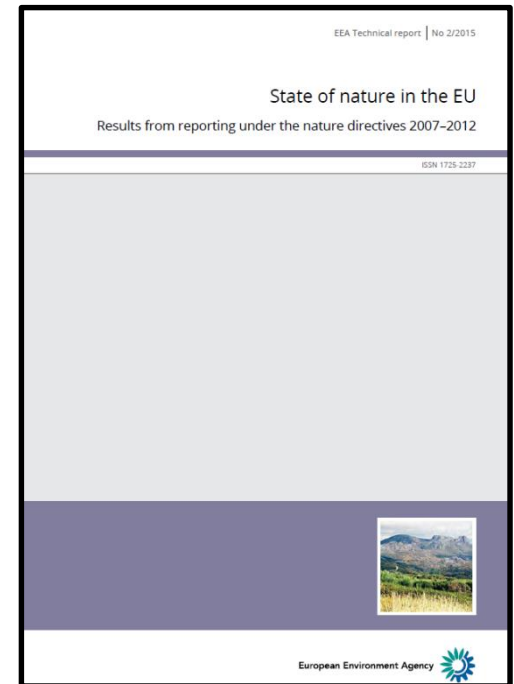
## Ecosystem condition Assessment



## Ecosystem services Assessment

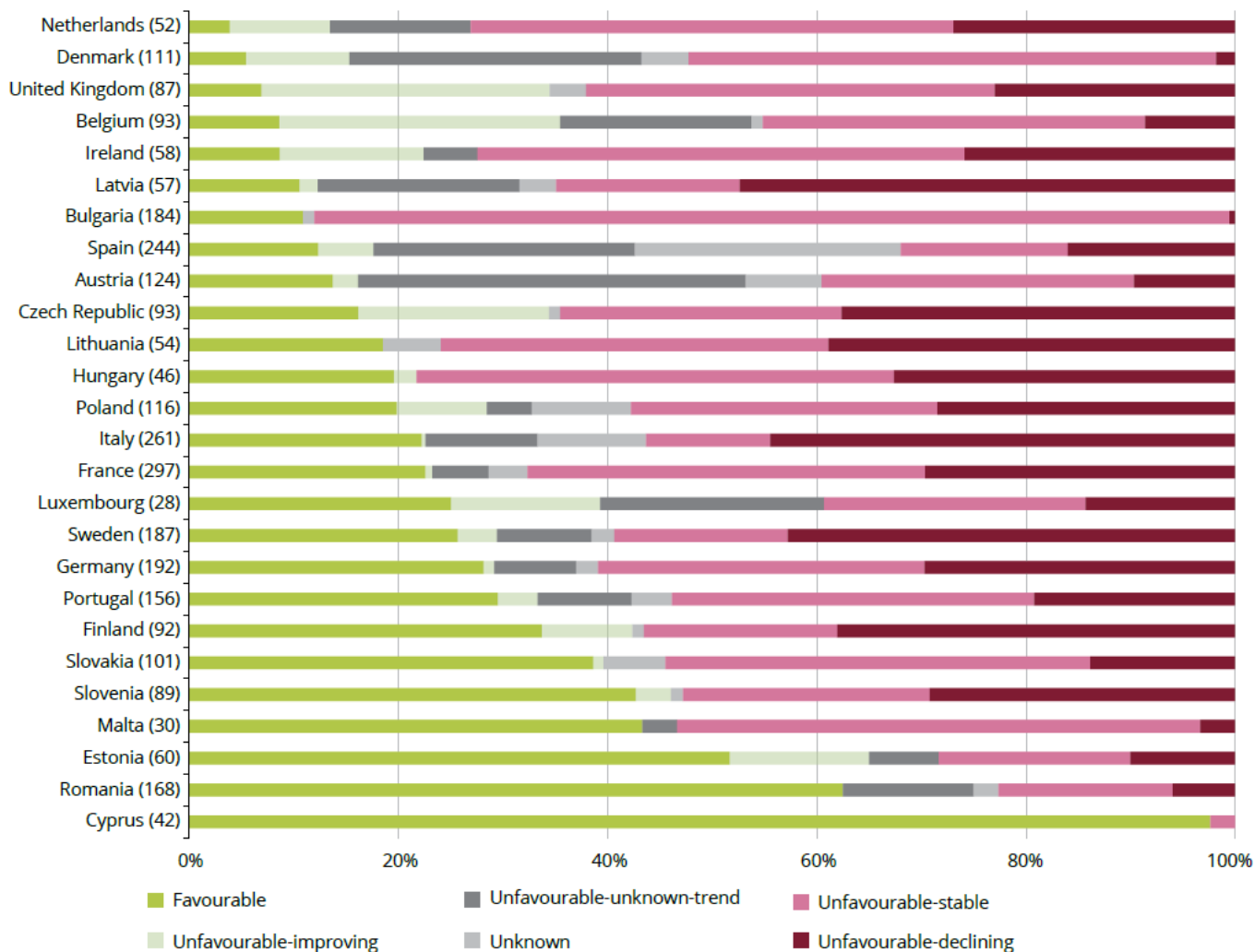


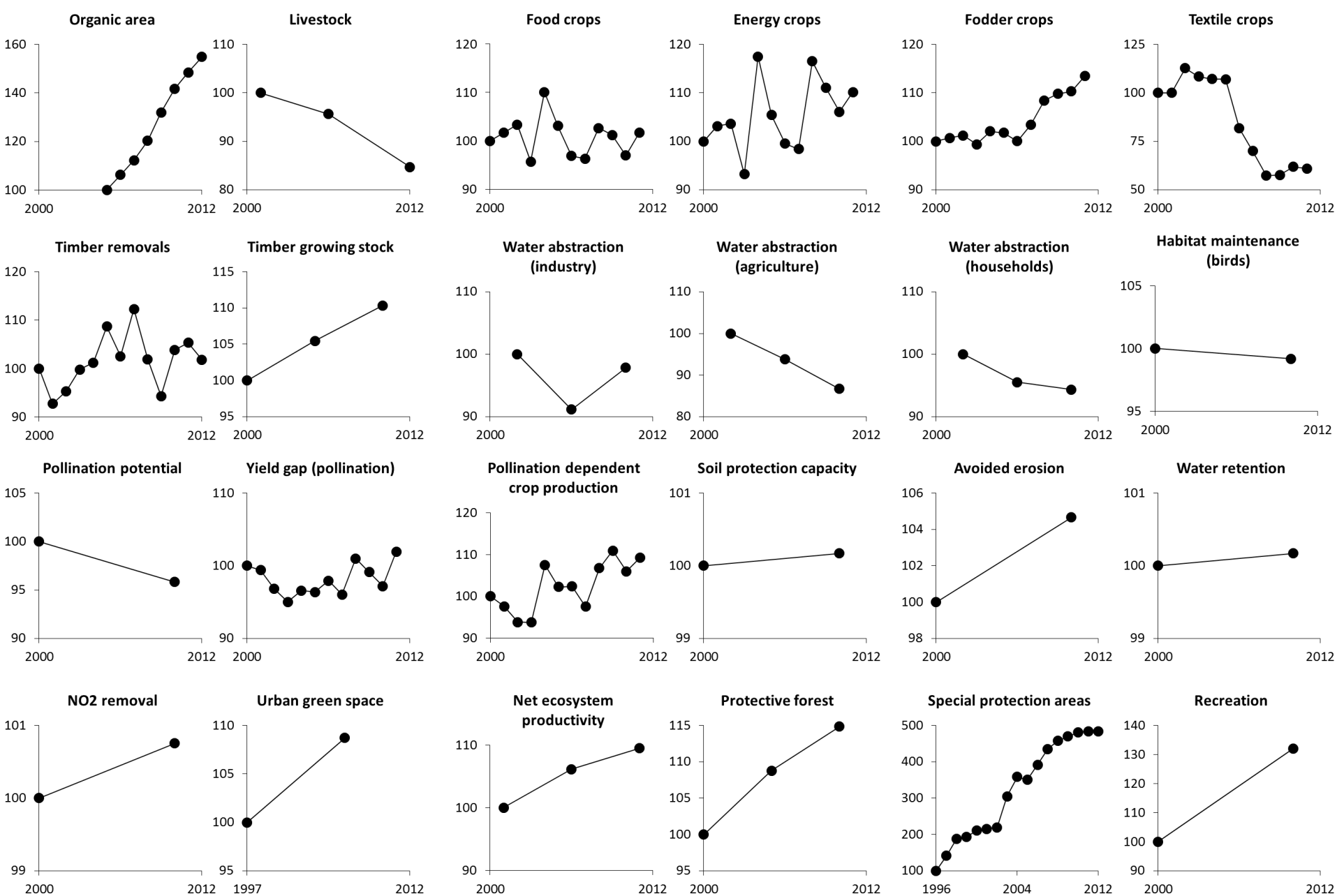
## State of nature (Birds and Habitats)



# Conservation status (based on Art. 17)

Figure 3.2 Conservation status and trends of habitats assessed as unfavourable at Member State level



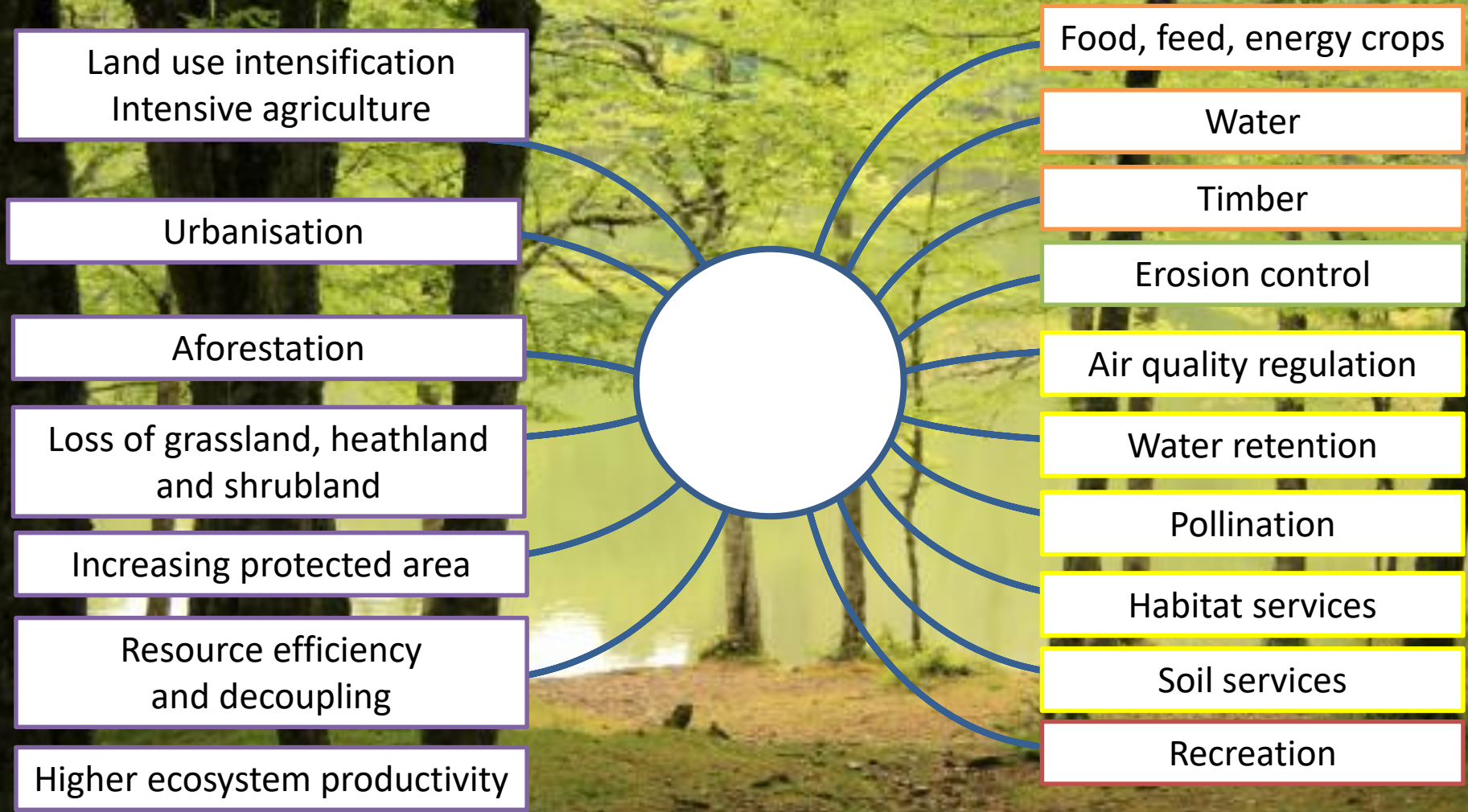


**Source:** Maes et al. (2015) Mapping and Assessment of Ecosystems and their Services: Trends in ecosystems and ecosystem services in the European Union between 2000 and 2010. Report EU 27143 EN.

<http://publications.jrc.ec.europa.eu/repository/bitstream/JRC94889/lbna27143enn.pdf>



# Contrasting patterns at work at EU scale?

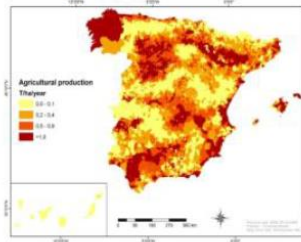




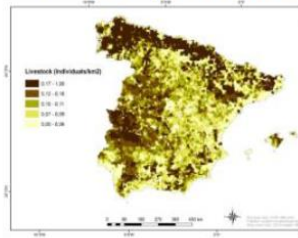
# Land use intensity versus ecosystem services in Spain (Spanish NEA, national scale data)

## Provisioning Services

Crop production



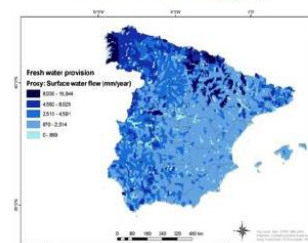
Livestock production



Timber production

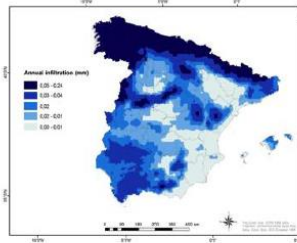


Freshwater supply

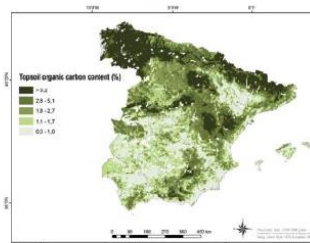


## Regulating Services

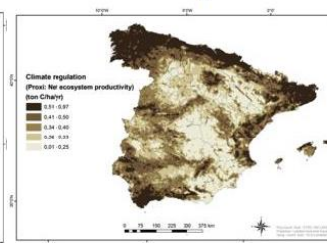
Water infiltration



Soil fertility

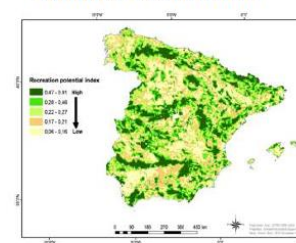


Carbon storage



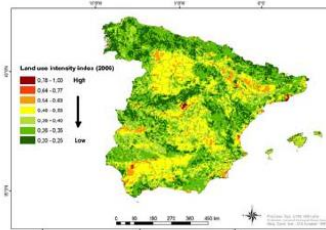
## Cultural Services

Nature recreation

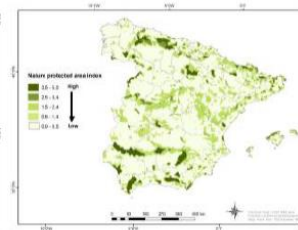


## Drivers of change

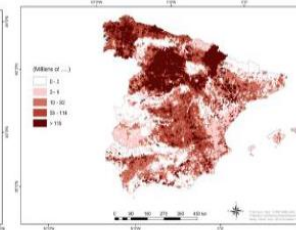
Land use intensity



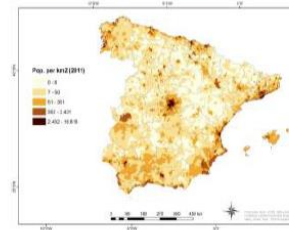
Protected areas



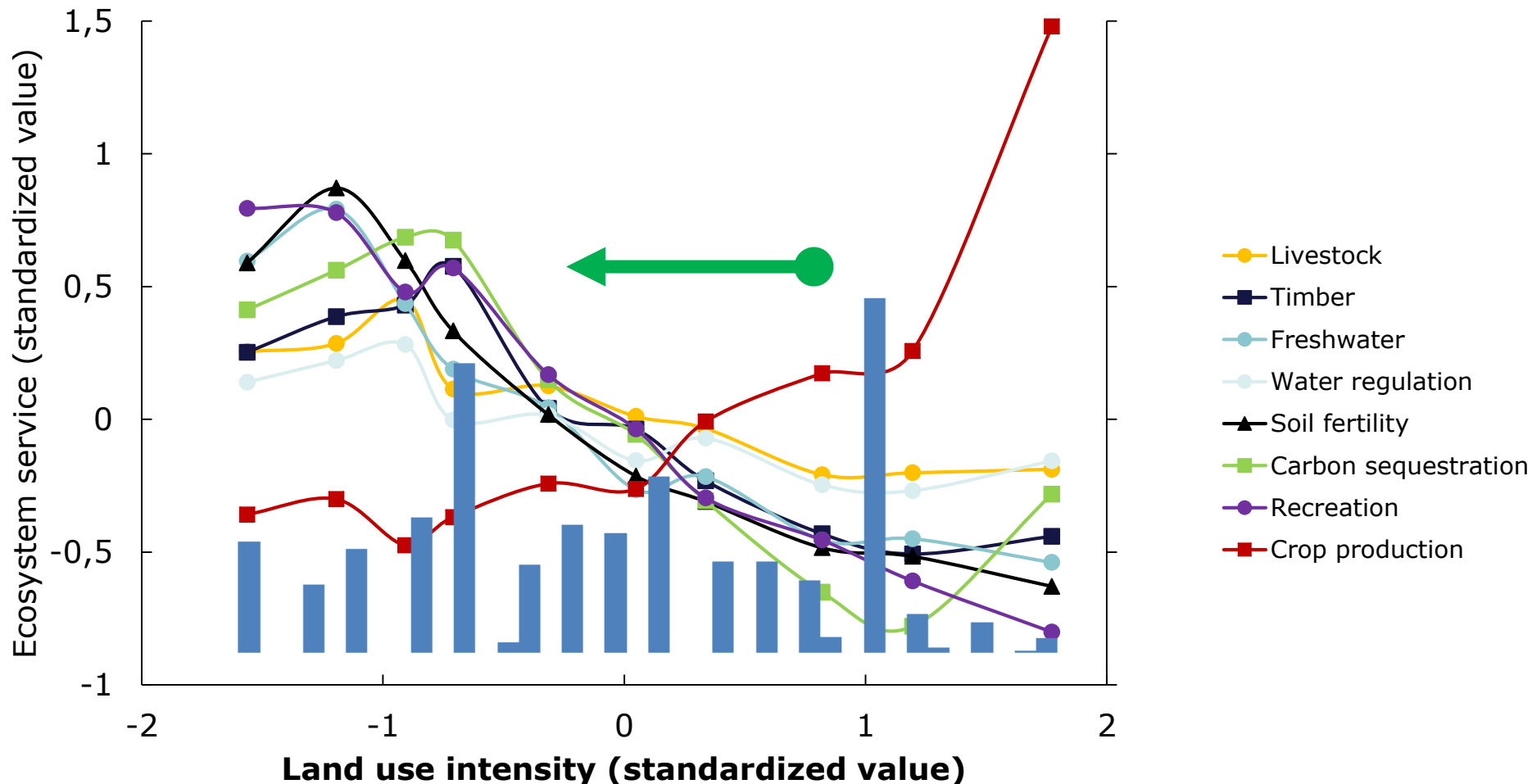
Pollution



Human population



# Land use intensity versus ecosystem services in Spain (Spanish NEA, national scale data)

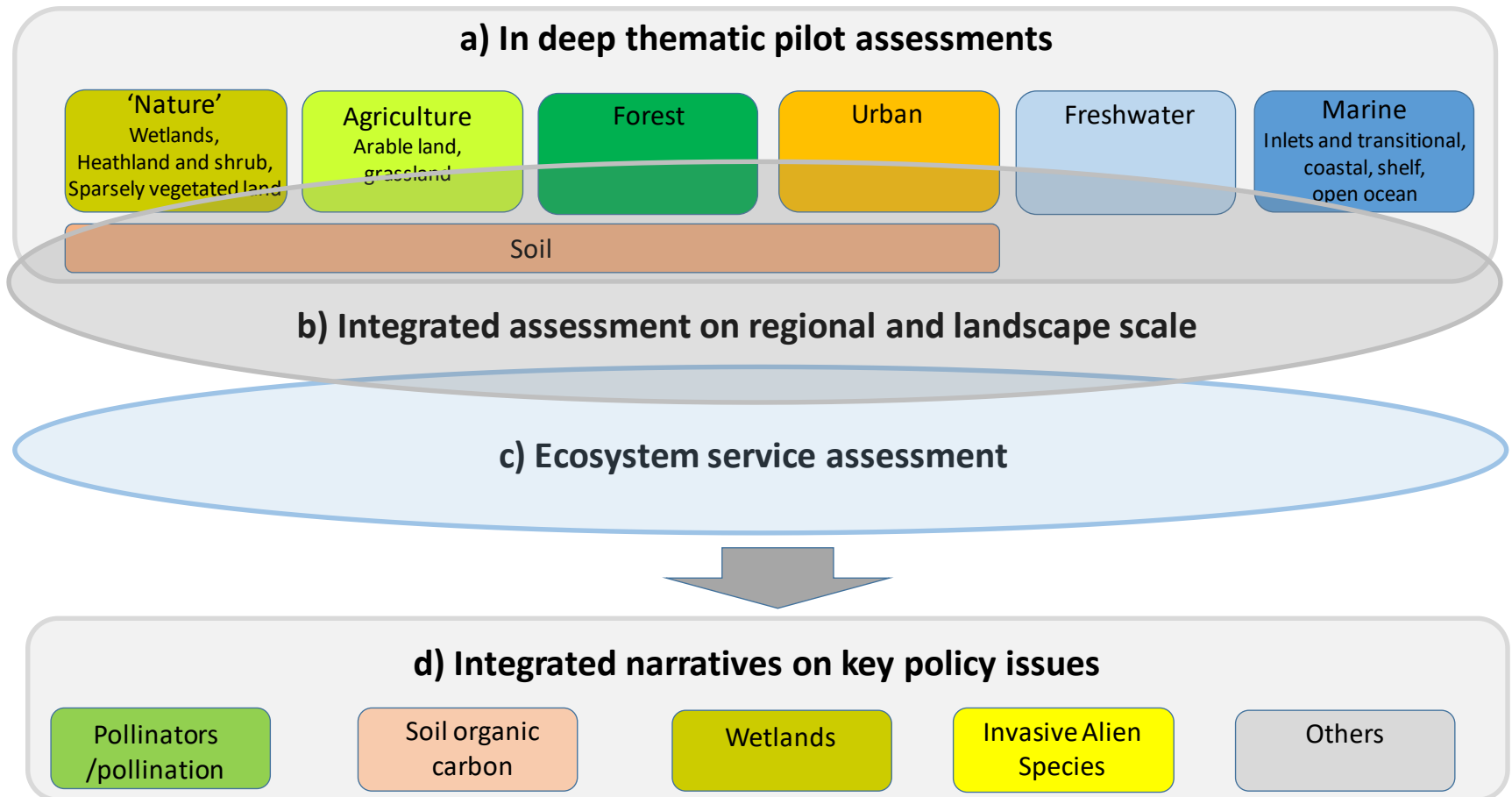


**Source:** Santos-Martín, F. et al. (submitted to Ecosystem Services). Mapping ecosystem services synergies and trade-offs along a gradient of land-use intensity

# MAES EU wide ecosystem assessment

- EEA + JRC + ENV: Analysis of trends, causes, needs for policy and actions
- EU wide assessment planned for 2019
- Basis for the post 2020 policy framework

# MAES EU wide ecosystem assessment



# Stay in touch



EU Science Hub: [ec.europa.eu/jrc](https://ec.europa.eu/jrc)



Twitter: [@EU\\_ScienceHub](https://twitter.com/EU_ScienceHub)



Facebook: [EU Science Hub - Joint Research Centre](https://www.facebook.com/EU_Science_Hub_-_Joint_Research_Centre)



LinkedIn: [Joint Research Centre](https://www.linkedin.com/company/joint-research-centre)



YouTube: [EU Science Hub](https://www.youtube.com/EU_Science_Hub)